

SmartLX is an optical consistency transmitter designed for the paper and pulp industry. It is suitable for clean mechanical pulps and for use in the vicinity of a pulp mill's dryer machine.



Technical Specifications

Applicability: Clean pulps without fillers.

Consistency range: 0.5 to 5.0 %Cs (mechanical pulps)
0.7 to 5.0 %Cs (chemical pulps)

Span: 0.5 %Cs minimum.

Flow velocity: min. 1.0 m/s (< 2.5 %Cs),
otherwise 1.5 m/s.

Damping: 1 to 60 s.

Output signal: 4-20 mA + HART®

Power supply: 115/230 VAC, 49-61 Hz

Load capacity: 0 to 600 W. HART® requires min.
250 W load resistance.

Process pressure: max. 10 bar.

Operating conditions:
Ambient: -20 to 60 °C, 0-95%
R.H. (no condensation)
Process: 0 to 100 °C
Storage: -20 to 80 °
Vibration: max. 2g per 10-500 Hz

Performance: Repeatability: 0.01 %Cs.
Process temperature effect:
max. 0.1 %Cs per 10°C.

Materials: Transmitter electronics enclosure:
Aluminium alloy.
Wetted parts: AISI 316L.
Wetted gaskets: EPDM 281.
Other gaskets: Fluoro rubber or
NBR.
Operator unit housing:
Polycarbonate.

Enclosure class: Sensor: IP 66 (NEMA4X).
Operator unit: IP 65.

Weight: Transmitter: 4 kg.
Mounting parts: 5 kg.

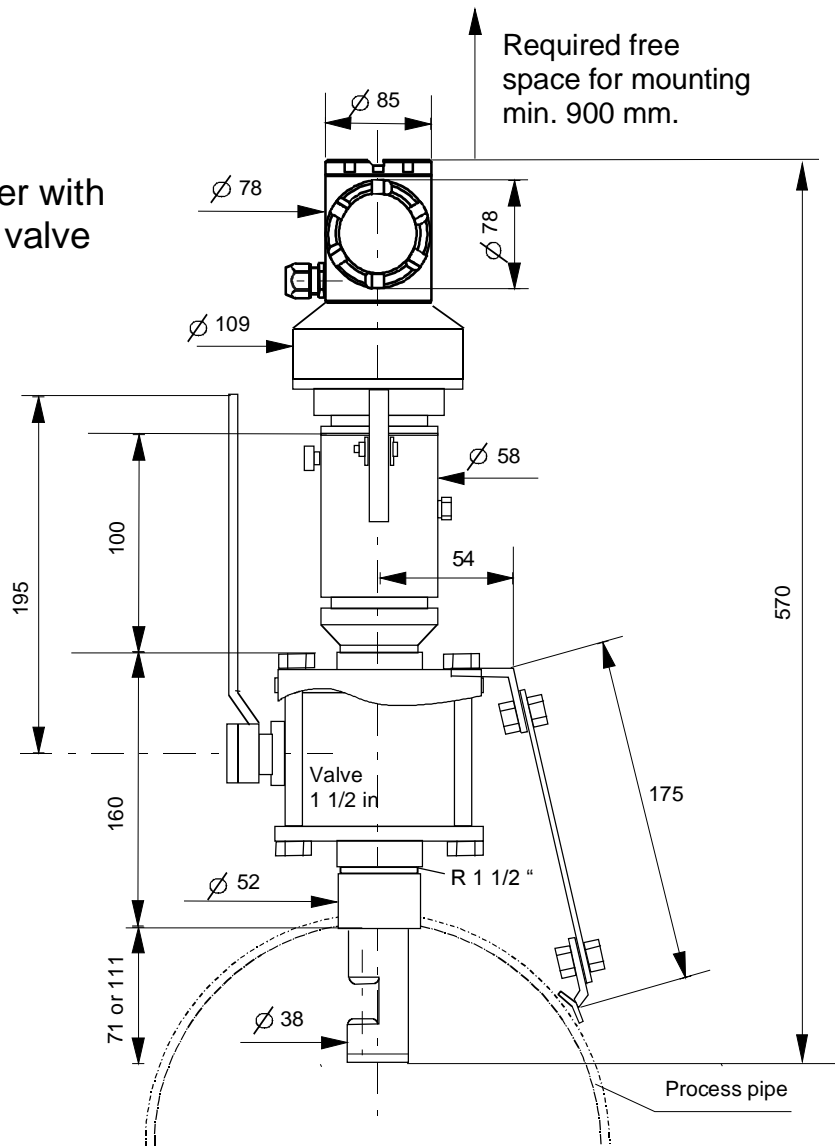
Mounting: In main process flow. May be
removed with mounting tool while
process
is running. At right angles to the
direction of flow.

Process connection: DN 40 mm ball valve, installation
pipe, process coupling, vibration
absorbers. Minimum process pipe
diameter DN100.

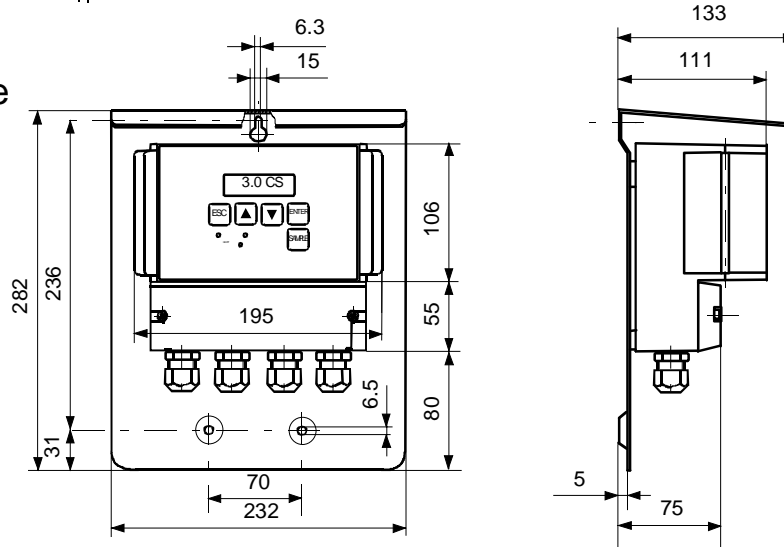
Electrical connections:
Terminals in operator unit
housing. Housing equipped with
sealed wire inlets.

EMC test standards: Radiated interference: EN50081-1
: 1993
Reference standard: EN55022 :
1987 / Class B
Interference immunity: EN50082-2
: 1995
Reference standards: EN61000-4-
2, -4, -5, -8, -11
ENV50140, ENV50204, ENV50141

Transmitter with mounting valve assy.



Operator unit with back plate



Dimensions for SmartLX

SmartLX Optical consistency transmitter

BCs210
2002-04-24

